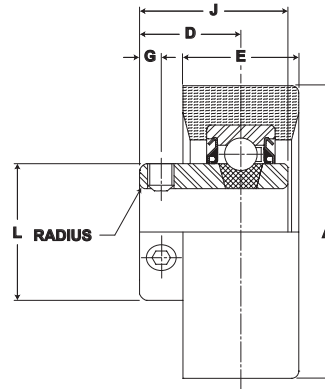


# Browning<sup>®</sup> Mounted Ball Bearings



- Duty:** Light
- Rolling Elements:** Ball
- Housing:** Cylindrical O.D.  
Rubber Grommet
- Lock:** Setscrew
- Seal:** Contact
- Temperature:** -20° to 200°F
- Relube:** No



## RUBRS 100 Series Light Duty Rubber Grommets - Setscrew Locking

BORE DIAMETER inch	STEADY RADIAL LOAD lb/N	PART No.	BEARING INSERT No.	DIMENSIONS inch / mm						UNIT Wt. lb/kg
				A	D	E	G	J	L	
1/2		RUBRS-108	SLRS-108							
5/8	250 1112	RUBRS-110	SLRS-110	2 17/32 64.3	7/8 22.2	1 25.4	3/16 4.8	1 9/32 32.5	1 3/16 30.2	.5 .23
3/4		RUBRS-112	SLRS-112							
15/16	300	RUBRS-115	SLRS-115	2 17/32 64.3	7/8 22.2	1 25.4	3/16 4.8	1 3/8 34.9	1 3/8 34.9	.6 .27
1	1334	RUBRS-116	SLRS-116							

Metric dimensions for reference only.  
 Not all parts are available from stock. Please contact customer service for availability (800) 626-2120.  
 For more information on bearing capabilities outside of our standard offering, please contact Application Engineering (800) 626-2093.